

ENTRY KIT 2022



Index ...

National Sales Awards 2022	2
Industry Today	3
Industry Categories	6
Entrant Categories	9
Period of Review	10
Awards Criteria	10
Maximum Number of Entries Rule	11
Submission process	11
Judging process	12
Entry Fees	16
Entry Deadlines	16
Language of Evaluation Process	16
Confidential Information of the Companies	16
Judge Panel	16
Observation - Judging Session	17
Payment Method	17
Contact Details	18

National Sales Awards 2022

Sri Lanka Institute of Marketing (SLIM) is the National body for Marketing in Sri Lanka and has been promoting marketing excellence and elevating the status of marketing since 1970. It is a member of the National Chamber of Commerce of Sri Lanka (NCCSL), Organization of Professional Associations of Sri Lanka (OPA) and Federation of Chamber of Commerce and Industry of Sri Lanka (FCCISL).

Living to our mission to establish marketing as the driving force, which enhances business and national value we are proud to welcome you to NSA 2022.

We at NSA reward high performing individuals for their efforts and achievements in the sales fraternity and provide national level recognition at Premier event, which will be held in February 2023.

Vision

Recognizing sales professionals in par with the world standards while positioning the awards scheme as the best, in the south Asian Region.

Objectives

- To raise the standard of Sales Professionalism in Sri Lanka.
- National to Global Level
- Sales Excellence, rewarding and motivating
- To Achieve greater heights
- To recognize and reward the potential (Capacity) and the performance (Capability) of sales Professionals
- To promote sales as an honorable and respectable profession

Inception

This prestigious event has been held for 20 consecutive years, as companies made their nominations for outstanding sales professionals who were given a training (1/2day) by an eminent panel of sales professionals in the industry which was followed up with a celebration of their success.

In 2010, SLIM went one step further and introduced the inaugural NASCO awards program which became the premier event for sales fraternity to recognize sales personal among wide range of industries under their job scopes. All entries were screened via eminent panel of judges to select best performers in the country to excel in their career progression. In 2013, NASCO introduced a special award for female sales professionals under each category.2020-year NASCO further excels its scope by recognition and rewards performers in both B2B and B2C segments. This will open doors to individuals and organizations who are involved in commercial B2B level to apply on their performance. In addition, we will further expand to reward and recognize women's participation in Sales fraternity by giving them more opportunity within industries defined in the table on page 04.

And in 2022, we decided to revamp NASCO to National Sales Awards to recognize sales Professionals in par with the world standards.

Industry Categories

	Industry / Sector	Definition	Buyer
1	Alcohol & Tobacco	Ready for consumption liquor & Tobacco products	Trade WS/Retail/General HORECA
2	Automotive	Vehicles (Cars, trucks, motorcycles), Support Services & Products, tires, batteries, paint, quick-lube, Interior/exterior detailing, etc.	End consumer & intermediaries
3	Corporate Sales	Business sales involve, working in a company that sells directly to the other business.	B2B
4	Consumer Durables & Electronics	TV, Audio Systems, Home entertainment products, other furniture and electronic appliances, Air conditioners and Luxury ware, audio & video accessories	End consumer & intermediaries
5	Pharmaceutical	Sales and promotion of pharmaceutical products, which may include medicines, or surgical devices, consumables of any form, machines, and equipment used in surgeries	Intermediaries & General Institutions (Hospitals etc.)
6	FMCG – Food	Packaged and frozen foods	Intermediaries, General Institutions & General HORECA
7	FMCG – Beverages	Hot and Cold consumer beverages, Flavored and Natural beverages, Milk powder & supplements, Energy drinks	
8	Banking	Deposits, Loans, Credit Cards, Stock Brokering, Wealth Management and Micro Financing	End consumer- Individuals and Organizations

	Industry / Sector	Definition	Buyer
9	Financial service providers	Leasing & Lending	End consumer- Individuals & Organizations
10	FMCG – Cosmetics & Others	Cosmetics, fragrances, shampoos, hairsprays, soaps deodorants, hair coloring, personal care, cleaning products, waxes, detergents, floor-care products, fabric softeners/ paper products, domestic services	Intermediaries & General Institutions
11	Industrial, Manufacturing & Energy	Ready to use & semi completed products, Value added products derived from a manufacturing process, goods or component parts for use or consumption by other industries or firms, Renewable Energy, Petroleum, Lubricants, Generators	End users & B2B
12	Insurance – General	Motor, Fire, Burglary, Marine, Accident – mostly 1-year policies	End users & B2B
13	Insurance – Life	Life & Retirement Policies	
14	Shops & Showrooms (Chains & standalone)	Tangible and intangible products and services sold from single or multiple static locations	End consumer & B2B
15	Telecommunication	Products & Services: Fixed / Mobile services, voice, data, cable, broadband, etc. mobile telephony devices & accessories	End consumer & B2B
16	Modern Trade	Organized retail involves a more organized and coordinated approach to distribution and logistics management. It includes large players such as supermarket chains, hypermarkets, mini-supermarkets and other organize retail businesses.	B2B Retail

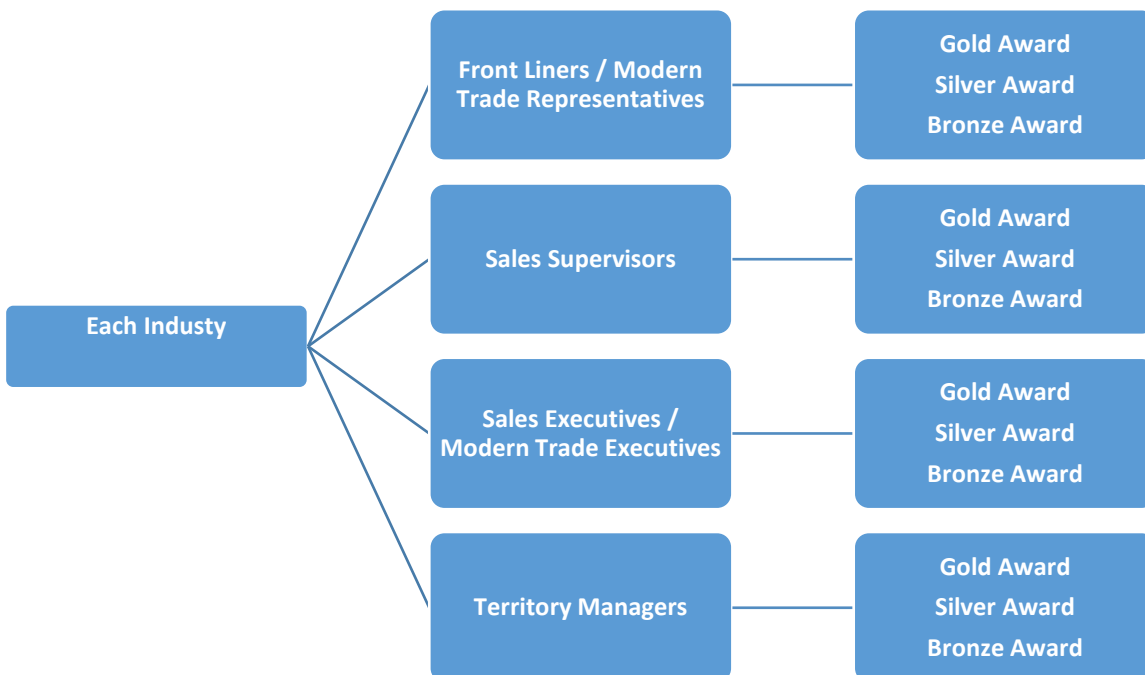
	Industry / Sector	Definition	Buyer
17	Agriculture	Agriculture based products & services	End consumer & B2B
18	Social selling	Use of B2B and B2C social media strategy that utilizes social networking sites and applications to generate leads, sales or one-on-one relationships with consumers.	End consumer & B2B
19	Media	Magazines, newspapers, web sites, consumer or trade media, radio and television stations (Inc. networks), advertising agency services	B2B
20	Other Industries	(IT & E Commerce - Desk and portable computers, computer peripherals, software, groupware, operating systems, or any other software marketed for consumer or business users, e-commerce services	End users & B2B
		Logistics - Selling of facilities and services of shipping, freight forwarding & cargo, logistics & storage	B2B
		Real Estate & Construction - Apartments, Condominiums, Lands and Property sales & services, Construction industry Contractors & Material Suppliers	End consumers & B2B
		Hospitality - Ticketing, Tour Operators, Airlines, Cruises, Amusement Parks, Hotel & Recreational, MICE (Meetings, Incentives, Conferences, Exhibitions	End consumers & B2B

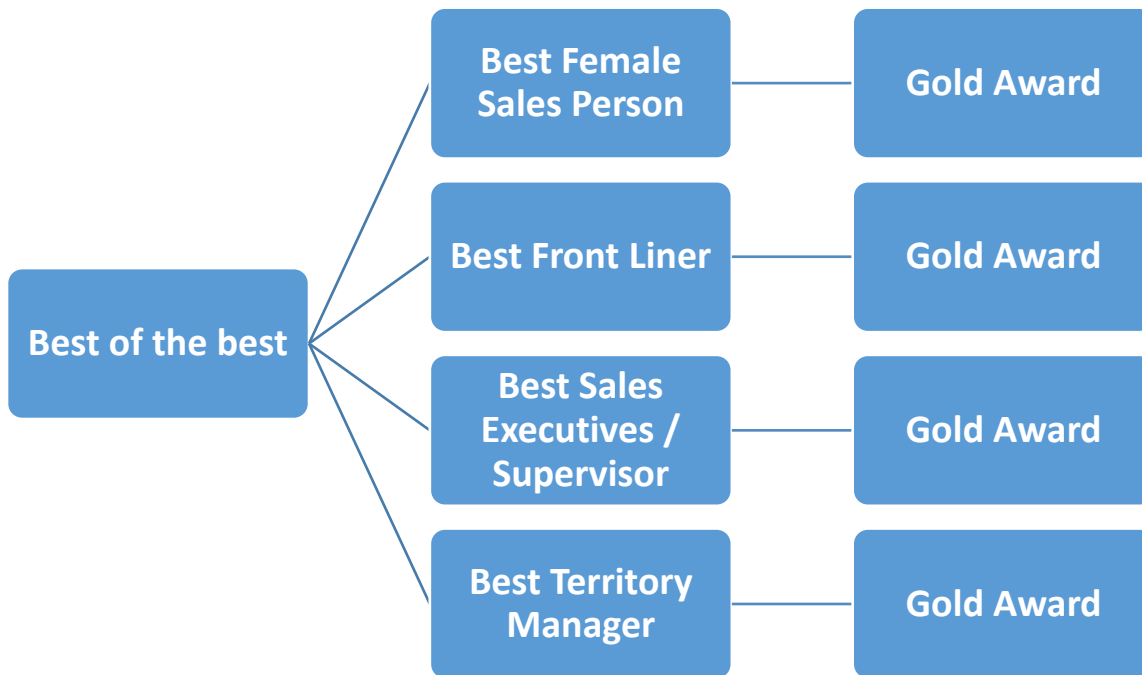
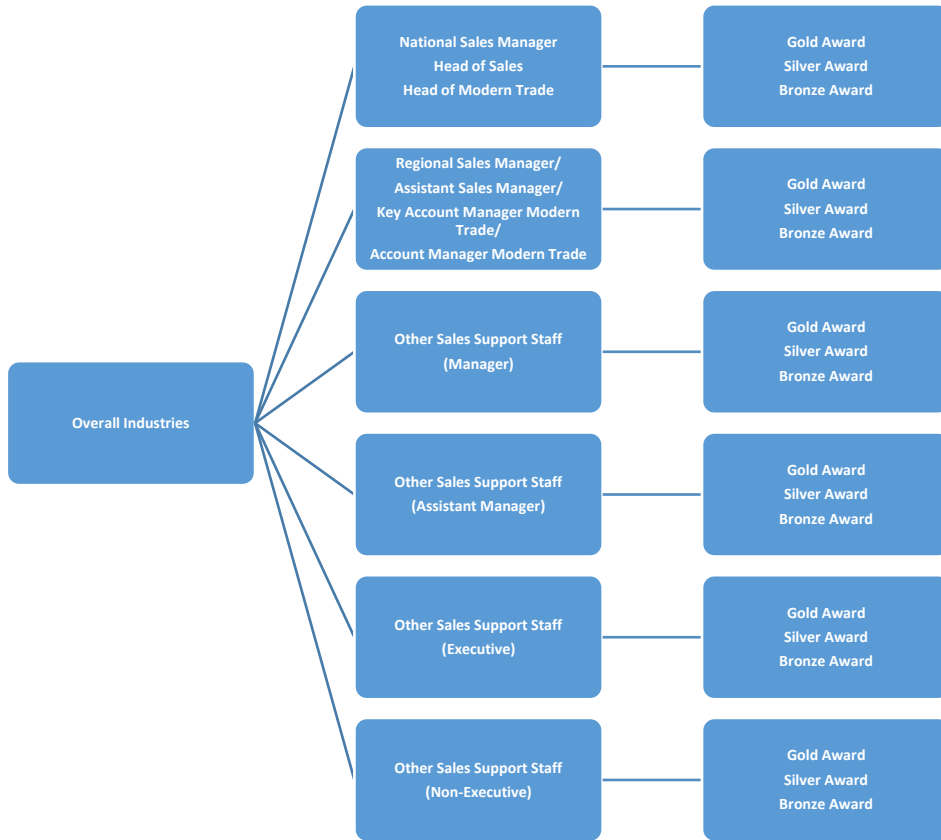
Industry / Sector Categories

Organizations operating across above highlighted industries located locally (Operates in regional level) are eligible to submit their entries. **You may submit any number of entries within the stipulated limit to any of the above categories. Make sure you follow on the entry kit on how to write and submit your entries**

- Front Liners (FL)
- Sales Supervisors (SS)
- Sales Executives (SE)
- Territory Managers (TM)
- Regional Sales Managers (RSM)
- National Sales Managers (NSM)
- Other Sales Support Staff (Non-Executives, Executives, Assist. Manager and Managers) (OST)

***Important notice - Refer page 08 on Entrant Categories for further details.**





- **Best of the Best** - The most “Outstanding female Sales Person” award will be selected from across the levels (FL, SE and TM). They will have a separate selection judging round, and the same judging system would be applied for the “Outstanding Sales Executive, Front Liner and Territory Manager” as well.

* **Important notice:**

These awards will include a trophy and a certificate. In addition, all nominees unless disqualified, will receive a certificate of participation. These certificates will be posted in the months following the awards gala.

Entrant Categories

- **Front-Liners (FL)**

An Individual with frontline sales responsibility and being evaluated for individual sales performance.

- **Sales Executives and Sales Supervisors (SE)**

Recognizing Sales professionals who are in the Executive or Supervisory category of the organization. They should have at least one direct report of the category defined below.

- **Territory Managers (TM)**

Recognizing Managers with titles such as Area Sales Manager, and Territory Manager who are responsible for a defined geographic territory or a set of customers. They should have at least three direct reports who are in the other two categories defined below.

- **Regional Sales Manager (RSM) / Assistant Sales Manager (ASM)**

Individuals who are responsible for sales in a specific region/s who reports to NSM/SM. He/she will have reports from other levels (TM, SE) mentioned above.

- **National Sales Manager (NSM) / Head of Sales (HS)**

Individuals who are responsible for overall sales in the organization across all regions in the country. They will be reporting to GM Sales or CEO/MD.

- **Other Sales Support staff**

Individuals who play a direct sales support role who reports to NSM/SM/ Head of Sales. He/she will can be in Sales Admin, Sales Training, Sales Finance, Sales Recruitment, etc.

Period of Review

The period of review shall be the year ending **31st December 2021 or 31st March 2022** for NSA 2022 Awards.

Nominated applicant should have worked in the organization under specific job category for not less than 12 months as at the time entry review period.

Awards Criteria

- Each category has a possible Gold, Silver and Bronze awards winner for Front liners, Sales Supervisors, Sales Executives and Territory Managers.
- For National Sales Manager & Regional Sales Managers categories there will be an overall Gold, Silver and Bronze awards selected irrespective of the industry they represent.
- No awards will be made if no entry achieves the threshold.
- If there is any dispute, the Head of the Judging panel will have the final verdict in a casting vote.
- It is possible that a category may produce one, two, three or four winners of any level or perhaps no winners at all – no matter the number of finalists.
- The judge's scores determine whom to be awarded Gold, Silver or Bronze. Each winning level - Gold, Silver and Bronze - has a minimum score required in order for a finalist to be eligible for an award.

*** Important notice:**

All decisions on screening & judging made by the Jury and the Organizers are final

Maximum Number of Entries Rule

Each registered organization may make only the prescribed maximum no. of nominations as stated below.

- **National Sales Manager/ Head of Sales / Head of Modern Trade (NSM / HS / HMD)**
- Any
- **Regional Sales Manager / Asst. Sales Manager / Key Account Manager Modern Trade / Account Manager Modern Trade (RSM / ASM / KAMMT / AMMT)**
- Any
- **Other Sales Support Staff**
 - **Managers** - Three (03)
 - **Assistant Managers** - Three (03)
 - **Executives** - Three (03)
 - **Non-Executives** - Three (03)
- **Territorial Managers** - Six (06)
- **Sales Executives** - Any
- **Sales Supervisors** - Any
- **Front Liners / Modern Trade Representatives** - Any

* Important notice:

Separate business units under the same legal entity cannot make nominations on their own. Outsourced employees can be nominated separately, but should be nominated under the parent organization.

Submission process

A separate nomination must be made for each person nominated by the organization. Organizations are advised to nominate only **outstanding sales professionals** on the basis of their performance in the current job and the potential to take higher responsibilities in their organization. The organizational evaluation must be done by the head of the sales function of the organization and countersigned by the CEO of the organization.

Judging process

Evaluation of nominees for awards will be based on following broad areas;

Potential (Capacity)

This refers to the ability of the nominee to move up in the sales hierarchy to the next higher level. The nominee must demonstrate that he/she has recognized the needs of the next higher level and has taken tangible steps to develop his/her skills to take up higher responsibilities. These will include specific requirements of the job as well managerial skills.

Performance (Capability)

This refers to how well the nominee has performed in his/her current job with respect to his/her job functions and standards during the 12 months under review. The nominee must provide oral evidence of the functions allocated to him/her, standards set for those and to what extent he/she has met or exceeded them. The nominee must also be able to articulate how he achieved these successes with specific examples.

Strategic Input (Value)

This refers to the ability of the nominee to add strategic value to business while performing assigned sales target.

Front Liners & Sales Executives / Sales Supervisors

For applicants under this category judging process will involve a **face-to-face interview** (5 minutes) with a sub panel of 3 - 5 judges and the judges will ask **questions for 05 minutes** and individual scores will be entered. Finally the totaled scores will be presented to the judges for final consent.

Evaluation of nominees for awards will be based on criteria below;

1. Potential (Capacity) 60%
2. Performance (Capability) 40%

Territory Managers

Each nominee will be given **10 minutes to present** (preferably on power point format), on evaluation criteria's mentioned above below. The judges will ask **questions for 05 minutes** and individual scores will be entered. Finally the totaled scores will be presented to the judges for final consent.

Evaluation of nominees for awards will be based on criteria below;

- | | |
|------------------------------------|------------|
| 1. Potential (Capacity) | 50% |
| 2. Performance (Capability) | 40% |
| 3. Strategic Input (Value) | 10% |

National Sales Manager / Sales Manager

Each nominee will be given **10 minutes to present** (preferably on power point format), on following key criteria. The judges will ask **questions for 10 minutes** and individual scores will be entered. Finally the totaled scores will be presented to the judges for final consent.

Evaluation of nominees for awards will be based on criteria below;

1. **Brand & Sales strategy development 30%**
2. **Leadership behavior 20%**
3. **Future oriented 10%**
4. **Coaching & mentoring 20%**
5. **Achievement 20%**

Regional Sales Manager / Assistant Sales Manager

Each nominee will be given **10 minutes to present** (preferably on power point format), on following key criteria. The judges will ask **questions for 10 minutes** and individual scores will be entered. Finally the totaled scores will be presented to the judges for final consent.

Evaluation of nominees for awards will be based on criteria below;

1. **Brand understanding (Not brand plans only) 10%**
2. **Sales strategy development support 20%**
3. **Leadership behavior 20%**
4. **Future oriented 10%**
5. **Coaching & mentoring 20%**
6. **Achievement 20%**

Other Sales Support Staff

Managers

For applicants under this category judging process will involve a **face-to-face interview** and/or **10 minutes presentation** (preferably on power point format) on following key criteria. The judges will ask **questions for 05 minutes and** individual scores will be entered. Finally, the totaled scores will be presented to the judges for final consent.

Evaluation of nominees for awards will be based on criteria below;

1. **Brand understanding (Not brand plans only) 10%**
2. **Sales strategy development support 20%**
3. **Leadership behavior 20%**
4. **Future oriented 10%**
5. **In-field-coaching & mentoring 20%**
6. **Achievement 20%**

Asst. Managers

For applicants under this category judging process will involve a **face-to-face interview** and/or **10 minutes presentation** (preferably on power point format) on following key criteria. The judges will ask **questions for 05 minutes and** individual scores will be entered. Finally, the totaled scores will be presented to the judges for final consent.

Evaluation of nominees for awards will be based on criteria below;

1. **Brand understanding (Not brand plans only) 10%**
2. **Sales strategy development support 20%**
3. **Leadership behavior 20%**
4. **Future oriented 10%**
5. **In-field-coaching & mentoring 20%**
6. **Achievement 20%**

Executive

For applicants under this category judging process will involve a face-to-face interview (5 minutes) with a sub panel of 3 - 5 judges and the judges will ask questions for 05 minutes and individual scores will be entered. Finally, the totaled scores will be presented to the judges for final consent.

Evaluation of nominees for awards will be based on criteria below;

1. **Brand understanding (Not brand plans only) 10%**
2. **Sales strategy development support 20%**
3. **Leadership behavior 20%**
4. **Future oriented 10%**
5. **In-field-coaching & mentoring 20%**
6. **Achievement 20%**

Non-Executive

For applicants under this category judging process will involve a face-to-face interview (5 minutes) with a sub panel of 3 - 5 judges and the judges will ask questions for 05 minutes and individual scores will be entered. Finally, the totaled scores will be presented to the judges for final consent.

Evaluation of nominees for awards will be based on criteria below;

1. **Brand understanding (Not brand plans only) 10%**
2. **Sales strategy development support 20%**
3. **Leadership behavior 20%**
4. **Future oriented 10%**
5. **In-field-coaching & mentoring 20%**
6. **Achievement 20%**

Entry Fees

Nomination forms must be handed over to the SLIM Secretariat at SLIM Home, #94, Ananda Rajakaruna Mawatha, Colombo 10, by **5.00 pm on 30th November, 2022** by obtaining an official receipt. Each nomination must accompany a receipt obtained from SLIM for the nomination fees paid by the organization. All entries will be pre-screened by a panel appointed by the organizing committee.

Nomination fees for NSA 2022 are as follows. If you would like to pay by cheque, it should be drawn in favor of **"Sri Lanka Institute of Marketing"**.

• Front-Liners	-	Rs. 12,000.00 + Taxes
• Sales Executives and Sales Supervisors	-	Rs. 14,000.00 + Taxes
• Territorial Managers	-	Rs. 16,000.00 + Taxes
• Others (Sales Support Staff)	-	Rs. 16,000.00 + Taxes
• Regional Sales Managers / Asst. Sales Manager	-	Rs. 18,000.00 + Taxes
• National Sales Managers / Sales Manager	-	Rs. 20,000.00 + Taxes

Entry Deadlines & Important Dates

- **Entry deadline** - **November 30th 2022**
- **Judging dates** - **January (Saturdays & Sundays only)**
- **Grand finale** - **February 2023**

* Important notice:

Judging schedule will be notified to the company coordinator 1 week prior to the judging date.

Language of Evaluation Process

English language is NOT mandatory

Confidential Information of the Companies

Confidential information's are not required for this evaluation process, if you have any confidential information that cannot be viewed by the general public or published anywhere. Information marked as confidential will be treated as such.

Judge Panel

Entries in each category are judged by 3 - 5 analyst judges from different industries. The awards are judged by an esteemed panel of industry leaders and experts.

Observation - Judging Session

Representative from the management of your company gets an opportunity to witness your applicants' judging sessions at the judging premises.

Payment Method

Entry fees are payable in cash or check.

Cheque should be drawn in favor of "Sri Lanka Institute of Marketing".

CONTACT DETAILS

SLIM Event Team –

Ms. Gangani Liyanage, Assistant Manager-Events: +94 70 326 6988

Mr. Dimithra Silva, Manager – Events: 070 346 3171

Contact Number SLIM: +94 11 267 5000

Stay Connected on social media for daily news feeds about NSA 2022

Facebook - Official Fan Page <https://m.facebook.com/slimnationalsalesawards>

Web Site - Sri Lanka Institute of Marketing - slim.lk/nationalsalesawards/

Postal Address - Sri Lanka Institute of Marketing,
#94, Ananda Rajakaruna Mawatha,
Colombo 10.